

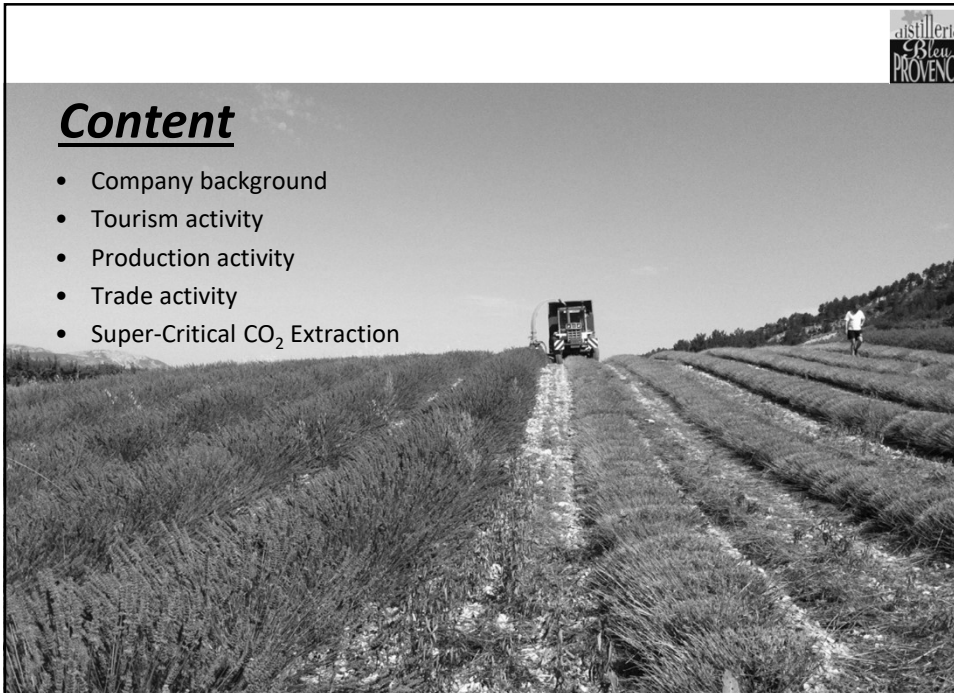


Distillerie Bleu Provence

1

Content

- Company background
- Tourism activity
- Production activity
- Trade activity
- Super-Critical CO₂ Extraction

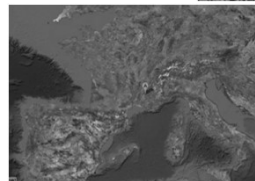


Distillerie Bleu Provence

2

Company background

- Located in Nyons, FRANCE
- Philippe Soguel, owner and manager
- Founded in 1994 with the buyout of the "Distillerie du Val d'Eygues"
- 8 employees
- Turnover : € 6,2 Millions (2018)



Distillerie Bleu Provence

3

Essential Oil Production

- Distillation of Essential Oil and Floral Water
- Organic EU certification
- About 60 farmers, for a total of 1,000 acres
- Production about 8-10 tons / year Essential Oil



Distillerie Bleu Provence

4

Essential Oil Production

distillerie
Bleu
PROVENCE

- A new generation of harvesting machine : the ESPIEUR
 - Comb the lavender and harvest only the flower
 - Divide by 3 the transportation volume
 - Decrease of 25% of the steam used
 - Crush the stem and let a fresh and green layer in the field



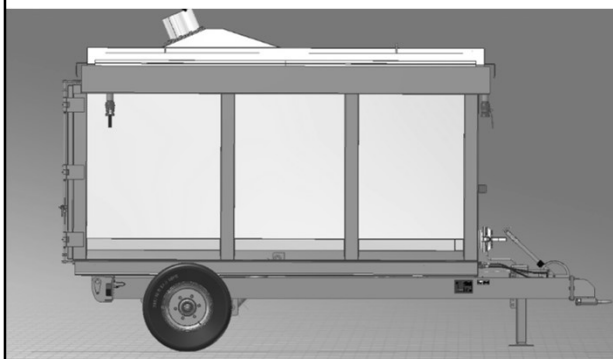
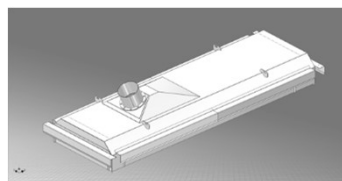
Distillerie Bleu Provence

5

Essential Oil Production

distillerie
Bleu
PROVENCE

- Distillation container :
 - Implementation in March
 - 12 m³ for 1 hectare of Espieur harvest (about 2,5 acres)



Distillerie Bleu Provence

6

- 1) Filling in the field by Espieur
- 2) Plugging at the Distillery
 - steam in entry
 - vapor to the condenser
- 3) Emptying for compost in the field

Super-Critical CO₂ Extraction

Distillerie
Bleu
PROVENCE

- Partnership in Super Critical CO₂ Extraction Consortium :

Atelier
Fluides
SuperCritiques

- R&D and production equipment :



Distillerie Bleu Provence

7

Super-Critical CO₂ Extraction

Distillerie
Bleu
PROVENCE

- 1) Organic South of France Plant extracts : Lavender, Thyme, Rosemary, Geranium, Mint ...



- 2) Imported raw material :

- Vanilia
- Olibanum
- Myrrh



Distillerie Bleu Provence

8

Production and Trade Team



Philippe Soguel
Managing Director

Founder of the company in 1994, he has in charge the overall strategic planning and business management of the company. He oversees development process of new product and finance of the Distillery.

- Team & Administrative Management -
- Trading & Negotiation -

+33 475 261 042
+33 680 686 290

@ psoguel@distillerie-bleu-provence.com



Clément Pascal
Technical Director

Chemist engineer, he ensures the proper functioning of the extraction processes and follows the stable quality of our productions. He oversees the supply chain.

- Production Management -
- Quality Management -

+33 475 261 042

@ cpascal@distillerie-bleu-provence.com



Michael Gaud
Production & Warehouse Technician

Versatility is what best describes its activities. Distillation has no secrets for him from reception of the raw material up to product packaging.

- Stock management -
- Order picking -

+33 475 261 042

@ mgaud@distillerie-bleu-provence.com



Claire Leydet
Agriculture & Project Manager

As Agronomist engineer, she is in charge of the sourcing and follow-up of the agricultural productions. Furthermore she accompanies the new projects in development.

- Monitoring of producers -
- Relation with partners -

+33 475 261 042

@ cleydet@distillerie-bleu-provence.com

